



**REGIONAL SPECIALISED METEOROLOGICAL CENTRE-TROPICAL CYCLONES, NEW DELHI
TROPICAL WEATHER OUTLOOK**

DEMS-RSMC TROPICAL CYCLONES NEW DELHI DATED 18.10.2024

TROPICAL WEATHER OUTLOOK FOR NORTH INDIAN OCEAN (THE BAY OF BENGAL AND THE ARABIAN SEA) VALID FOR NEXT 168 HOURS ISSUED AT 0600 UTC OF 18.10.2024 BASED ON 0300 UTC OF 18.10.2024.

BAY OF BENGAL:

A FRESH UPPER-AIR CYCLONIC CIRCULATION VERY LIKELY TO FORM OVER NORTH ANDAMAN SEA AROUND 20TH OCTOBER. UNDER ITS INFLUENCE, A LOW-PRESSURE AREA LIKELY TO FORM OVER CENTRAL BAY OF BENGAL AROUND 22ND OCTOBER, THEREAFTER, IT IS LIKELY TO MOVE NORTHWESTWARDS AND INTENSIFY FURTHER INTO A DEPRESSION BY 24TH OCTOBER.

SCATTERED LOW AND MEDIUM CLOUDS WITH EMBEDDED INTENSE TO VERY INTENSE CONVECTION LAY OVER SOUTH BAY OF BENGAL AND ANDAMAN SEA (MINIMUM CTT MINUS 70-85 DEGREE CELCIUS). SCATTERED LOW AND MEDIUM CLOUDS WITH EMBEDDED ISOLATED MODERATE TO INTENSE CONVECTION LAY OVER WESTCENTRAL BAY OF BENGAL AND ISOLATED WEAK TO MODERATE CONVECTION LAY OVER NORTH & EASTCENTRAL BAY OF BENGAL.

***PROBABILITY OF CYCLOGENESIS (FORMATION OF DEPRESSION) DURING NEXT 168 HRS**

24 HOURS	24-48 HOURS	48-72 HOURS	72-96 HOURS	96-120 HOURS	120-144 HOURS	144-168 HOURS
NIL	NIL	NIL	NIL	LOW	MOD	HIGH

***NOTE: EVERY 24HR FORECAST IS VALID UPTO 0300 UTC (0830 IST) OF NEXT DAY**

ARABIAN SEA:

YESTERDAY'S CYCLONIC CIRCULATION OVER NORTH LAKSHADWEEP & NEIGHBOURHOOD LAY OVER EASTCENTRAL ARABIAN SEA AT 0830 HOURS IST OF TODAY, THE 18TH OCTOBER, AND EXTENDED UPTO 5.8 KM ABOVE MEAN SEA LEVEL. UNDER ITS INFLUENCE, A LOW-PRESSURE AREA IS LIKELY TO FORM OVER THE SAME REGION DURING NEXT 12 HOURS. IT IS LIKELY TO BECOME MORE MARKED AND MOVE WEST-NORTHWESTWARDS AWAY FROM INDIAN COASTS DURING SUBSEQUENT 3 DAYS.

SCATTERED TO BROKEN LOW AND MEDIUM CLOUDS WITH EMBEDDED INTENSE TO VERY INTENSE CONVECTION LAY OVER CENTRAL ARABIAN SEA (MINIMUM CTT MINUS 90-93 DEGREE CELCIUS). SCATTERED LOW AND MEDIUM CLOUDS WITH EMBEDDED MODERATE TO INTENSE CONVECTION LAY OVER NORTHHEAST ARABIAN SEA OFF SOUTH GUJARAT COAST GULF OF CAMBAY AND ISOLATED WEAK TO MODERATE CONVECTION LAY OVER NORTHWEST & SOUTH ARABIAN SEA LAKSHADWEEP ISLAND AREA.

***PROBABILITY OF CYCLOGENESIS (FORMATION OF DEPRESSION) DURING NEXT 168 HRS**

:

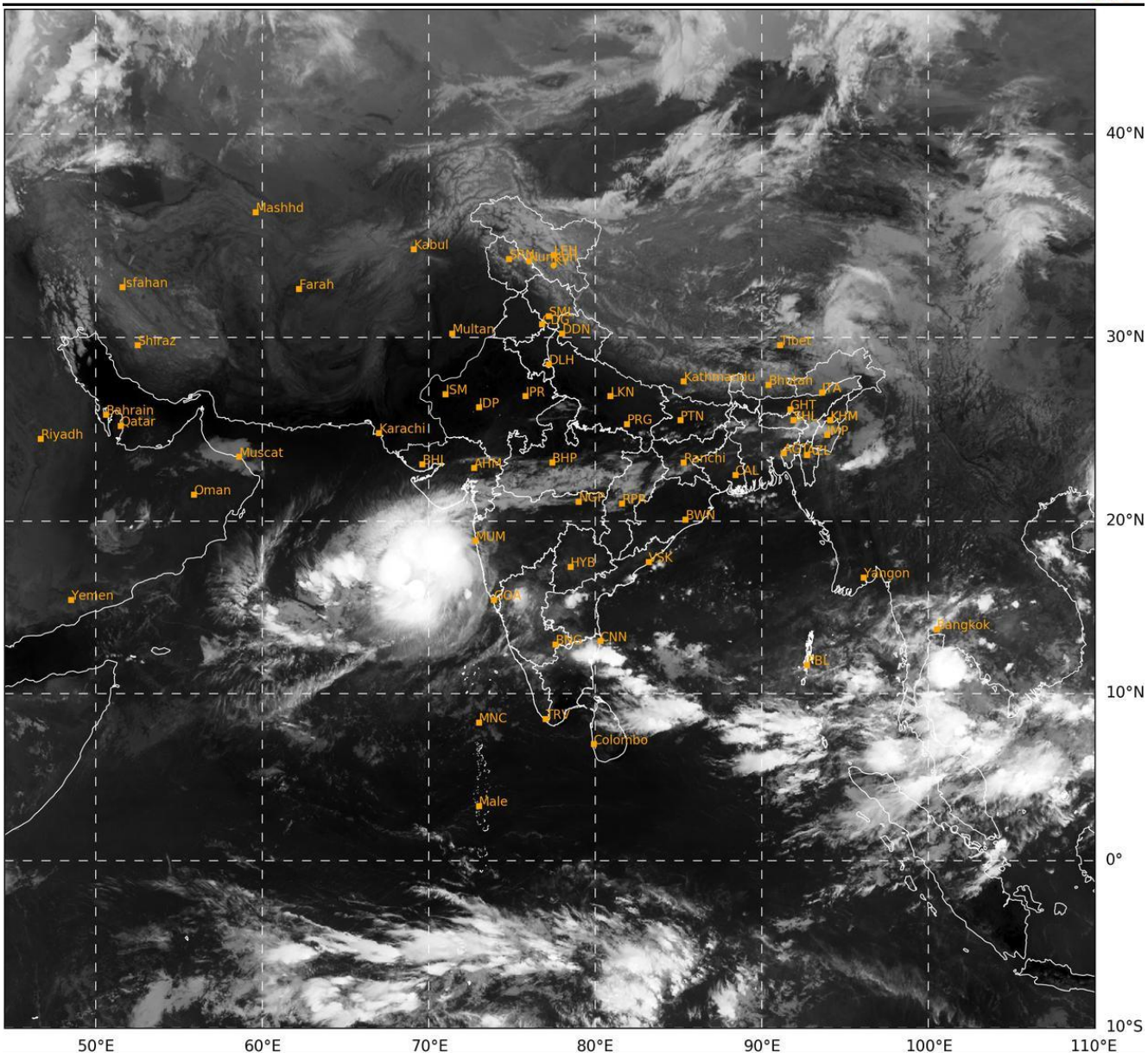
24 HOURS	24-48 HOURS	48-72 HOURS	72-96 HOURS	96-120 HOURS	120-144 HOURS	144-168 HOURS
NIL	LOW	LOW	NIL	NIL	NIL	NIL

***NOTE: EVERY 24HR FORECAST IS VALID UPTO 0300 UTC (0830 IST) OF NEXT DAY**

REMARKS: NIL

SAT : INSAT-3DR IMG
 IMG_TIR1 10.8 um
 LIC Mercator

18-10-2024/(0315 to 0342) GMT
 18-10-2024/(0845 to 0912) IST



415

941

IMD, DELHI

Cloud distribution: (a) Isolated: <25%, Scattered:25-50%, Broken: 51-75%, Solid:>75%, Convection Intensity: (a) Weak: Cloud Top Temperature (CTT) >-25°C, (b) Moderate: CTT: - 25°C to -40°C, (c) Intense: CTT: - 41°C to -70°C and (d) Very Intense: : Less than -70°C
PROBABILITY OF CYCLOGENESIS (FORMATION OF DEPRESSION):NIL: 0%, LOW: 1-33%, , MODERATE: 34-66% AND HIGH: 67-100%
 This is a guidance Bulletin for WMO/ESCAP Panel Member countries. Visit respective National websites for Country specific Bulletins